



Climax Metal Products Co.
Wickliffe, OH

MARKET UPDATE **SERIES**

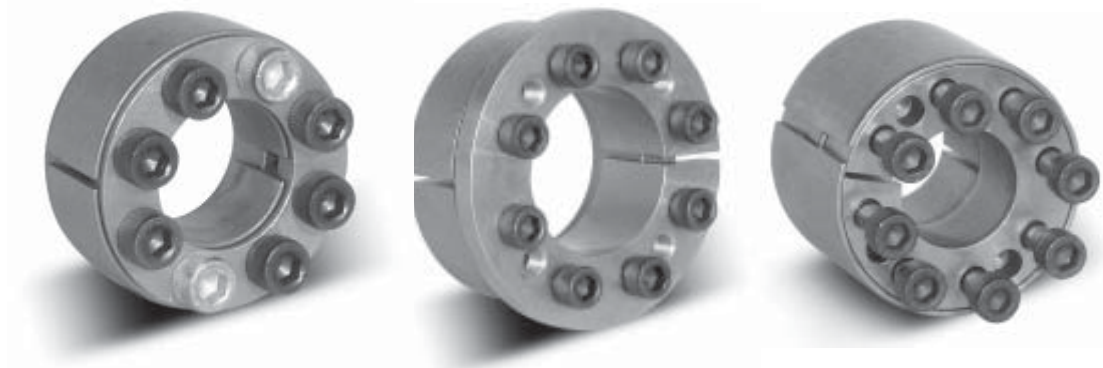
Problem:

The Customer needs an ideal way to connect components to a shaft, such as pulleys, gears and sprockets.



Solution:

Our new Climax Keyless Locking Assembly can solve this problem!



These components have the ability to transmit large amounts of torque, are unsurpassed in their resistance to axial forces and do not require a keyway!

So, if your customer needs high torque capability and zero backlash - ask about our new Keyless Locking Assemblies!

Call Climax Customer Service for More Information
1-800-542-6552.

*As always, we appreciate
your Business!*



Phone: 800-542-6552

Fax: 800-860-5553

email: sales@climaxmetal.com

Form No. MUKLA01 - 6/04

KEYLESS LOCKING ASSEMBLIES MARKET UPDATE

Climax Metal Products Company • www.climaxmetal.com • Phone: 800-542-6552 • Fax: 800-860-5553