



Climax Metal Products Co.
Wickliffe, OH

MARKET UPDATE SERIES

NEW End-Stop Shaft Collars: The solution you're looking for..

This UNIQUE line of specialty application collars is custom designed with a large notch to fit over the rail assemblies that are used with precision shafting.

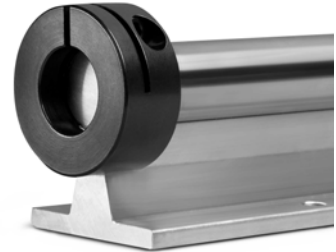
The one-piece clamp-on design creates a secure grip and eliminates the problem of set-screws not being able to "bite into" hardened steel shafts.

Available in:

- Black Oxide coated steel
- Type 303 Stainless Steel.

Stock bore sizes that will fit the most common precision shafting diameters:

1/2", 5/8", 3/4", 1-1/4", 1-1/2"



***If you sell shaft and rail assemblies —
Remember to offer your customers Climax's NEW End-Stop Collars.***

**Contact Climax for more information on our
complete line of Shaft Collars & Rigid Couplings.**

*As always, we appreciate
your Business!*



Phone: 800-542-6552

Fax: 800-860-5553

email: sales@climaxmetal.com