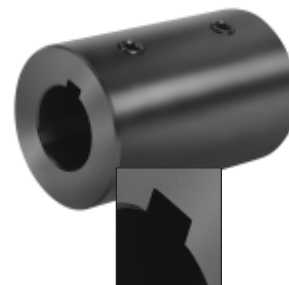


Set Screw Couplings - RC-Series

Black Oxide Steel	Stainless Steel	Aluminum	Bore Size	OD	Length	Set Screw	Box Qty	Approx. Weight (oz.)
RC-025	RC-025-S	RC-025-A	1/4	1/2	3/4	10-32 x 1/8	20	0.45
RC-031	RC-031-S	RC-031-A	5/16	5/8	1	10-32 x 1/8	20	1.00
RC-037	RC-037-S	RC-037-A	3/8	3/4	1	1/4-20 x 3/16	20	1.40
RC-050	RC-050-S	RC-050-A	1/2	1	1 1/2	1/4-20 x 1/4	5	3.80
RC-062	RC-062-S	RC-062-A	5/8	1 1/4	2	5/16-18 x 5/16	5	8.00
RC-075	RC-075-S	RC-075-A	3/4	1 1/2	2	5/16-18 x 3/8	5	11.60
RC-087	RC-087-S	RC-087-A	7/8	1 3/4	2	5/16-18 x 5/16	5	16.00
RC-100	RC-100-S	RC-100-A	1	2	3	5/16-18 x 1/2	2	32.00
RC-112	RC-112-S	RC-112-A	1 1/8	2 1/8	3	3/8-16 x 1/2	2	40.15
RC-125	RC-125-S	RC-125-A	1 1/4	2 1/4	4	3/8-16 x 1/2	2	48.30
RC-137	RC-137-S		1 3/8	2 1/2	4 1/2	3/8-16 x 1/2	1	55.15
RC-150	RC-150-S		1 1/2	2 1/2	4 1/2	3/8-16 x 1/2	1	62.00
RC-175	RC-175-S		1 3/4	2 3/4	4 1/2	3/8-16 x 1/2	1	70.60
RC-200	RC-200-S		2	3 5/16	4 1/2	1/2-13 x 1/2	1	109.00



- Traditional cost effective rigid coupling design
- Provides torque transmission and alignment

Black Oxide Steel With Keyway	Stainless Steel With Keyway	Bore Size	OD	Length	Set Screw	Box Qty	Approx. Weight (oz.)
RC-037-KW	RC-037-S-KW	3/8	3/4	1	1/4-20 x 3/16	20	1.40
RC-050-KW	RC-050-S-KW	1/2	1	1 1/2	1/4-20 x 3/16	5	3.80
RC-062-KW	RC-062-S-KW	5/8	1 1/4	2	5/16-18 x 1/4	5	8.00
RC-075-KW	RC-075-S-KW	3/4	1 1/2	2	5/16-18 x 1/4	5	11.60
RC-087-KW	RC-087-S-KW	7/8	1 3/4	2	5/16-18 x 5/16	5	16.00
RC-100-KW	RC-100-S-KW	1	2	3	5/16-18 x 3/8	2	32.00
RC-112-KW	RC-112-S-KW	1 1/8	2 1/8	3	3/8-16 x 3/8	2	40.15
RC-125-KW	RC-125-S-KW	1 1/4	2 1/4	4	3/8-16 x 3/8	2	48.30
RC-137-KW	RC-137-S-KW	1 3/8	2 1/2	4 1/2	3/8-16 x 3/8	1	55.15
RC-150-KW	RC-150-S-KW	1 1/2	2 1/2	4 1/2	3/8-16 x 3/8	1	62.00
RC-175-KW	RC-175-S-KW	1 3/4	2 3/4	4 1/2	3/8-16 x 3/8	1	70.60
RC-200-KW	RC-200-S-KW	2	3 5/16	4 1/2	1/2-13 x 3/8	1	109.00

DIMENSION Bore, Inch
BORE 1/4 to 1/2 5/8 to 2
TOLERANCE +.0005/+.0025 +.0005/+.0030

Metric Set Screw Couplings - MRC-Series

Black Oxide Steel	Stainless Steel	Bore Size	OD	Length	Set Screw	Box Qty	Approx. Weight (oz.)
MRC-10	MRC-10-S	10	19	25	M 5 x 5	5	1.40
MRC-12	MRC-12-S	12	22	38	M 6 x 6	5	3.50
MRC-15	MRC-15-S	15	31	50	M 6 x 6	5	8.00
MRC-20	MRC-20-S	20	38	50	M 6 x 6	5	11.60
MRC-25	MRC-25-S	25	50	76	M 8 x 8	2	32.00
MRC-30	MRC-30-S	30	57	101	M 8 x 8	2	47.00
MRC-35	MRC-35-S	35	63	114	M 8 x 10	1	55.00
MRC-40	MRC-40-S	40	63	114	M 10 x 10	1	62.00



Black Oxide Steel With Keyway	Stainless Steel With Keyway	Bore Size	OD	Length	Set Screw	Box Qty	Approx. Weight (oz.)
MRC-10-KW	MRC-10-S-KW	10	19	25	M 5 x 5	5	1.40
MRC-12-KW	MRC-12-S-KW	12	22	38	M 6 x 6	5	3.50
MRC-15-KW	MRC-15-S-KW	15	31	50	M 6 x 6	5	8.00
MRC-20-KW	MRC-20-S-KW	20	38	50	M 6 x 6	5	11.60
MRC-25-KW	MRC-25-S-KW	25	50	76	M 8 x 8	2	32.00
MRC-30-KW	MRC-30-S-KW	30	57	101	M 8 x 8	2	47.00
MRC-35-KW	MRC-35-S-KW	35	63	114	M 8 x 10	1	55.00
MRC-40-KW	MRC-40-S-KW	40	63	114	M 10 x 10	1	62.00

DIMENSION Bore, mm
BORE 10 to 12 15 to 40
TOLERANCE +.01/+.06mm +.01/+.08mm