

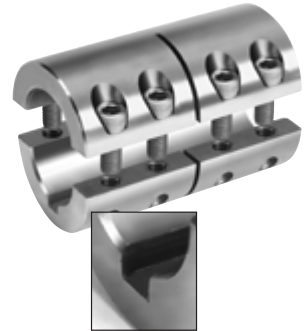
Metric Two-Piece Industry Standard Clamping Couplings - 2MISCC-Series

Black Oxide Steel	Stainless Steel	Bore Size	2nd Bore Size	OD	Length	Clamp Screw	Box Qty	Approx. Weight (oz.)
2MISCC-06-06	2MISCC-06-06-S	6	6	18	30	M 3 x 8	10	1.50
2MISCC-08-08	2MISCC-08-08-S	8	8	24	35	M 3 x 10	10	2.70
2MISCC-09-09	2MISCC-09-09-S	9	9	24	35	M 3 x 10	10	2.40
2MISCC-10-10	2MISCC-10-10-S	10	10	29	45	M 4 x 12	5	6.83
2MISCC-12-12	2MISCC-12-12-S	12	12	29	45	M 4 x 12	5	6.40
2MISCC-14-14	2MISCC-14-14-S	14	14	34	50	M 5 x 16	5	8.60
2MISCC-15-15	2MISCC-15-15-S	15	15	34	50	M 5 x 16	5	8.40
2MISCC-16-16	2MISCC-16-16-S	16	16	34	50	M 5 x 16	5	8.20
2MISCC-20-20	2MISCC-20-20-S	20	20	42	65	M 6 x 16	5	17.60
2MISCC-25-25	2MISCC-25-25-S	25	25	45	75	M 6 x 16	2	21.90
2MISCC-30-30	2MISCC-30-30-S	30	30	53	83	M 6 x 16	2	35.60
2MISCC-35-35	2MISCC-35-35-S	35	35	67	95	M 8 x 25	1	38.40
2MISCC-40-40	2MISCC-40-40-S	40	40	77	108	M 8 x 25	1	89.00
2MISCC-50-50	2MISCC-50-50-S	50	50	85	124	M 10 x 25	1	110.00



- High axial load and torque capacity
- Does not mar the shaft
- Easily installed without major disassembly

Black Oxide Steel With Keyway	Stainless Steel With Keyway	Bore Size	2nd Bore Size	OD	Length	Clamp Screw	Box Qty	Approx. Weight (oz.)
2MISCC-08-08-KW	2MISCC-08-08SKW	8	8	24	35	M 3 x 10	10	2.70
2MISCC-09-09-KW	2MISCC-09-09SKW	9	9	24	35	M 3 x 10	10	2.40
2MISCC-10-10-KW	2MISCC-10-10SKW	10	10	29	45	M 4 x 12	5	6.83
2MISCC-12-12-KW	2MISCC-12-12SKW	12	12	29	45	M 4 x 12	5	6.40
2MISCC-14-14-KW	2MISCC-14-14SKW	14	14	34	50	M 5 x 16	5	8.60
2MISCC-15-15-KW	2MISCC-15-15SKW	15	15	34	50	M 5 x 16	5	8.40
2MISCC-16-16-KW	2MISCC-16-16SKW	16	16	34	50	M 5 x 16	5	8.20
2MISCC-20-20-KW	2MISCC-20-20SKW	20	20	42	65	M 6 x 16	5	17.60
2MISCC-25-25-KW	2MISCC-25-25SKW	25	25	45	75	M 6 x 16	2	21.90
2MISCC-30-30-KW	2MISCC-30-30SKW	30	30	53	83	M 6 x 16	2	35.60
2MISCC-35-35-KW	2MISCC-35-35SKW	35	35	67	95	M 8 x 25	1	38.40
2MISCC-40-40-KW	2MISCC-40-40SKW	40	40	77	108	M 8 x 25	1	89.00
2MISCC-50-50-KW	2MISCC-50-50SKW	50	50	85	124	M 10 x 25	1	110.00



DIMENSION
Bore, mm

TOLERANCE
+.08/-.00mm