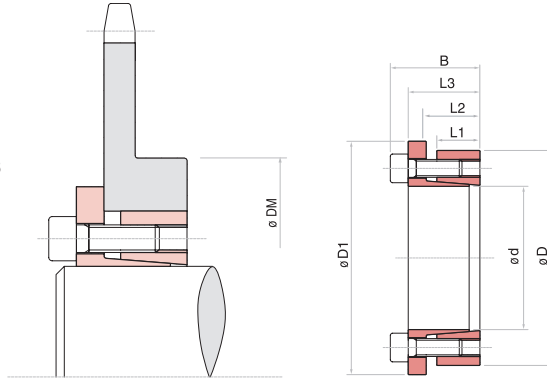


KEYLESS LOCKING ASSEMBLIES
MEDIUM-HIGH TORQUE 133-SERIES

Economical - Quick Installation - Compact Size

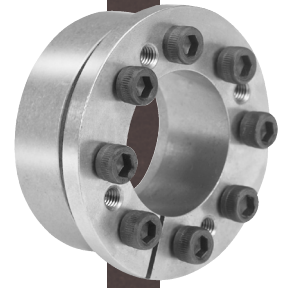
133-Series



Climax Metal Products Company • www.climaxmetal.com • Phone: 800-542-6552 • Fax: 800-860-5553

133 INCH Climax Part #	ID d inch	ID d inch	OD D inch	Length			Length Incl.cap B inch	D1 inch	MS Screw Seating Screw Size n x type	Torque LB-ft	Axial Torque Load (max.) Mt Lb-ft	Shaft Pressure (max.) Ps psi	Hub Pressure Ph psi	Weight (approx.) Lb	
				L1 inch	L2 inch	L3 inch									
C133E-075	3/4	0.7500	1.850	0.669	0.866	1.102	1.339	2.126	5 x M6	13	198	6391	33774	13689	1
C133E-087	7/8	0.8750	1.850	0.669	0.866	1.102	1.339	2.126	5 x M6	13	231	6391	28949	13689	1
C133E-100	1	1.0000	1.969	0.669	0.866	1.102	1.339	2.244	6 x M6	13	317	7669	30397	15441	1
C133E-112	1 1/8	1.1250	2.165	0.669	0.866	1.102	1.339	2.441	6 x M6	13	356	7669	27019	14038	1
C133E-118	1 3/16	1.1875	2.165	0.669	0.866	1.102	1.339	2.441	6 x M6	13	376	7669	25597	14038	1
C133E-125	1 1/4	1.2500	2.362	0.669	0.866	1.102	1.339	2.638	8 x M6	13	528	10226	32423	17157	1
C133E-137	1 3/8	1.3750	2.362	0.669	0.866	1.102	1.339	2.638	8 x M6	13	581	10226	29475	17157	2
C133E-143	1 7/16	1.4375	2.559	0.669	0.866	1.102	1.339	2.835	8 x M6	13	606	10226	28194	15837	2
C133E-150	1 1/2	1.5000	2.559	0.669	0.866	1.102	1.339	2.835	8 x M6	13	633	10226	27019	15837	2
C133E-162	1 5/8	1.6250	2.953	0.669	0.866	1.102	1.614	3.228	7 x M8	30	1108	16532	34274	18862	2
C133E-168	1 11/16	1.6875	2.953	0.787	0.984	1.299	1.614	3.228	7 x M8	30	1151	16532	33005	18862	2
C133E-175	1 3/4	1.7500	2.953	0.787	0.984	1.299	1.614	3.228	7 x M8	30	1193	16532	31826	18862	2
C133E-187	1 7/8	1.8750	3.150	0.787	0.984	1.299	1.614	3.425	7 x M8	30	1280	16532	29704	17683	2
C133E-193	1 15/16	1.9375	3.150	0.787	0.984	1.299	1.614	3.425	7 x M8	30	1322	16532	28746	17683	2
C133E-200	2	2.0000	3.150	0.787	0.984	1.299	1.614	3.425	7 x M8	30	1365	16532	27848	17683	3
C133E-212	2 1/8	2.1250	3.346	0.787	0.984	1.299	1.614	3.622	8 x M8	30	1657	18894	29954	19021	3
C133E-218	2 3/16	2.1875	3.346	0.787	0.984	1.299	1.614	3.622	8 x M8	30	1705	18894	29098	19021	3
C133E-225	2 1/4	2.2500	3.543	0.787	0.984	1.299	1.614	3.819	8 x M8	30	1754	18894	28290	17964	3
C133E-237	2 3/8	2.3750	3.543	0.787	0.984	1.299	1.614	3.819	8 x M8	30	1852	18894	26801	17964	3
C133E-243	2 7/16	2.4375	3.740	0.787	0.984	1.299	1.614	4.016	9 x M8	30	2138	21256	29378	19146	3
C133E-250	2 1/2	2.5000	3.740	0.787	0.984	1.299	1.614	4.016	9 x M8	30	2192	21256	28643	19146	3
C133E-256	2 9/16	2.5625	3.740	0.787	0.984	1.299	1.614	4.016	9 x M8	30	2248	21256	27945	19146	3
C133E-268	2 11/16	2.6875	4.331	0.945	1.181	1.575	1.969	4.606	8 x M10	61	3326	30000	31339	19448	6
C133E-275	2 3/4	2.7500	4.331	0.945	1.181	1.575	1.969	4.606	8 x M10	61	3404	30000	30626	19448	6
C133E-287	2 7/8	2.8750	4.528	0.945	1.181	1.575	1.969	4.803	8 x M10	61	3559	30000	29295	18602	6
C133E-293	2 15/16	2.9375	4.528	0.945	1.181	1.575	1.969	4.803	8 x M10	61	3636	30000	28671	18602	6
C133E-300	3	3.0000	4.724	0.945	1.181	1.575	1.969	5.000	8 x M10	61	3713	30000	28074	17827	6
C133E-325	3 1/4	3.2500	4.921	0.945	1.181	1.575	1.969	5.197	9 x M10	61	4525	33750	29154	19253	6
C133E-337	3 3/8	3.3750	4.921	0.945	1.181	1.575	1.969	5.197	9 x M10	61	4699	33750	28074	19253	6
C133E-343	3 7/16	3.4375	5.118	0.945	1.181	1.575	1.969	5.394	9 x M10	61	4786	33750	27564	18513	6
C133E-350	3 1/2	3.5000	5.118	0.945	1.181	1.575	1.969	5.394	9 x M10	61	4873	33750	27071	18513	7
C133E-375	3 3/4	3.7500	5.315	0.945	1.181	1.575	1.969	5.591	10 x M10	61	5801	37500	28074	19808	7
C133E-393	3 15/16	3.9375	5.709	1.024	1.260	1.732	2.205	5.984	8 x M12	107	7095	43680	28748	19828	9
C133E-400	4	4.0000	5.709	1.024	1.260	1.732	2.205	5.984	8 x M12	107	7208	43680	28298	19828	9

NOTE: Stocked sizes available through 8" diameter. It is possible to reduce the screws tightening torque down to 60% of the values indicated in the above table; as a result the Mt, Fax, Ps, Ph are reduced proportionally.



KEYLESS LOCKING ASSEMBLIES MEDIUM-HIGH TORQUE 133-SERIES

Economical - Quick Installation - Compact Size

Installation

Carefully clean the hub and shaft contact surfaces and apply a thin film of lightweight oil. Slide the locking assembly into the hub bore, insert the shaft and tighten gradually and regularly in crossed sequence all screws to reach the tightening torque Ms as indicated in the rating table.

The values Mt and Fax indicated in the rating table are valid only in case of oil installation. Do not use any oil with molybdenum bisulphide, high pressure additives or grease. Above substances notably reduce the coefficient of friction.

Dismantling

Loosen the clamping screws. Insert the screws into the dismantling threading and tighten gradually and regularly in crossed sequence until the back cone is released. If the element is to be reused, relubricate both screws and threads.

Axial Movement

133-Series: during tightening of mounting screws the hub has a slight axial movement with respect to the shaft.

Keyless Locking Assemblies...

- Offer a way to securely hold a pulley on a shaft
- Are ideal for hostile environments
- Guaranteed zero backlash
- Are not influenced by reversing loads
- Will not vibrate loose
- Work with cast iron or steel hubs
- Flange Couplings

Tolerances, surface finish

A good machined surface finish is sufficient.
Maximum allowable surface finish:

Rt max 16 µm (Ra 3 µm - Rz 13 µm)

Maximum permissible tolerances:

h8 for shaft (Ød)

H8 for hub (ØD)

For exact tolerance values and DM hub calculation see page 30.

133 METRIC	ID	ID	OD	Length			Length Incl.cap	D1	MS Screw Seating		Torque (max.)	Mt	Fax	Ps	Ph	Weight
				L1	L2	L3			B	Size						
Climax Part #	d x D mm	d inch	D inch	L1 inch	L2 inch	L3 inch	B inch	D1 inch	n x type	LB-ft	LB-ft	Lb-ft	Lbf	psi	psi	Lb
C133M-20x47	20 x 47	0.787	1.850	0.669	0.866	1.102	1.339	2.126	5 x M6	13	207	6295	31908	13779	0.7	
C133M-22x47	22 x 47	0.866	1.850	0.669	0.866	1.102	1.339	2.126	5 x M6	13	302	6295	29008	13779	0.7	
C133M-24x50	24 x 50	0.945	1.969	0.669	0.866	1.102	1.339	2.244	5 x M6	13	243	6295	26107	13053	0.7	
C133M-25x50	25 x 50	0.984	1.969	0.669	0.866	1.102	1.339	2.244	6 x M6	13	310	7644	30458	15229	0.7	
C133M-28x55	28 x 55	1.102	2.165	0.669	0.866	1.102	1.339	2.441	6 x M6	13	347	7644	27557	13779	0.9	
C133M-30x55	30 x 55	1.181	2.165	0.669	0.866	1.102	1.339	2.441	6 x M6	13	369	7644	25382	13779	0.9	
C133M-32x60	32 x 60	1.260	2.362	0.669	0.866	1.102	1.339	2.638	8 x M6	13	531	10116	31908	16679	0.9	
C133M-35x60	35 x 60	1.378	2.362	0.669	0.866	1.102	1.339	2.638	8 x M6	13	583	10116	29008	16679	0.9	
C133M-38x65	38 x 65	1.496	2.559	0.669	0.866	1.102	1.339	2.835	8 x M6	13	627	10116	26832	15229	1	
C133M-40x65	40 x 65	1.575	2.559	0.669	0.866	1.102	1.339	2.835	8 x M6	13	664	10116	25382	15229	1	
C133M-42x75	42 x 75	1.654	2.953	0.787	0.984	1.299	1.614	3.228	7 x M8	30	1128	16411	32633	18130	2	
C133M-45x75	45 x 75	1.772	2.953	0.787	0.984	1.299	1.614	3.228	7 x M8	30	1217	16411	31183	18130	2	
C133M-48x80	48 x 80	1.890	3.150	0.787	0.984	1.299	1.614	3.425	7 x M8	30	1298	16411	29008	17405	2	
C133M-50x80	50 x 80	1.969	3.150	0.787	0.984	1.299	1.614	3.425	7 x M8	30	1350	16411	28282	17405	2	
C133M-55x85	55 x 85	2.165	3.346	0.787	0.984	1.299	1.614	3.622	8 x M8	30	1696	18659	29008	18855	2	
C133M-60x90	60 x 90	2.362	3.543	0.787	0.984	1.299	1.614	3.819	8 x M8	30	1851	18659	26832	18130	2	
C133M-65x95	65 x 95	2.559	3.740	0.787	0.984	1.299	1.614	4.016	9 x M8	30	2257	21132	27557	18855	2	
C133M-70x110	70 x 110	2.756	4.331	0.945	1.181	1.575	1.969	4.606	8 x M10	61	3444	29900	30458	19580	4	
C133M-75x115	75 x 115	2.953	4.528	0.945	1.181	1.575	1.969	4.803	8 x M10	61	3688	29900	28282	18130	4	
C133M-80x120	80 x 120	3.150	4.724	0.945	1.181	1.575	1.969	5.000	8 x M10	61	3909	29900	26832	18130	4	
C133M-85x125	85 x 125	3.346	4.921	0.945	1.181	1.575	1.969	5.197	9 x M10	61	4647	33272	28282	19580	4	
C133M-90x130	90 x 130	3.543	5.118	0.945	1.181	1.575	1.969	5.394	9 x M10	61	4979	33272	26832	18855	5	
C133M-95x135	95 x 135	3.740	5.315	0.945	1.181	1.575	1.969	5.591	10 x M10	61	5827	37318	28282	19580	5	
C133M-100x145	100 x 145	3.937	5.709	1.024	1.260	1.732	2.205	5.984	8 x M12	107	7154	43618	29008	20305	7	

NOTE: Stocked sizes available through 8" diameter. It is possible to reduce the screws tightening torque down to 60% of the values indicated in the above table; as a result the Mt, Fax, Ps, Ph are reduced proportionally.

Climax Metal Products Company • www.climaxmetal.com • Phone: 800-542-6552 • Fax: 800-860-5553

133-SERIES KEYLESS LOCKING ASSEMBLIES - METRIC