

# ONE-PIECE CLAMPING COLLARS



Climax Metal Products Company • www.climaxmetal.com • Phone: 800-542-6552 • Fax: 800-860-5553

**Design fully engages the shaft without marring  
Greater axial holding power than set screw collars  
Effective on hard and soft shafts**

\* Screw lengths are for steel only.

\* Weights are approximate  
1C-Series Bore sizes 1 9/16" through 3" do not have a relief cut.

\* Zinc plated steel parts come with stainless steel screws.

**DIMENSION**  
Bore, Inch

**TOLERANCE**  
+.003/- .000

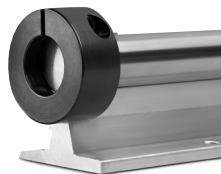
## CLIMAX METAL PRODUCTS COMPANY

### ONE-PIECE CLAMPING COLLARS - 1C-SERIES

Black Oxide Steel	T303 Stainless Steel	Aluminum	Zinc Plated Steel	Bore Size	OD	Width	Clamp Screw	Box Qty	Weight* (Ounce)
1C-012	1C-012-S	1C-012-A		1/8	11/16	5/16	4-40 x 3/8	20	0.44
1C-018	1C-018-S	1C-018-A		3/16	11/16	5/16	4-40 x 3/8	20	0.43
1C-025	1C-025-S	1C-025-A	1C-025-Z	1/4	11/16	5/16	4-40 x 3/8	20	0.40
1C-031	1C-031-S	1C-031-A		5/16	11/16	5/16	4-40 x 3/8	20	0.36
1C-037	1C-037-S	1C-037-A	1C-037-Z	3/8	7/8	3/8	6-32 x 3/8	20	0.70
1C-043	1C-043-S	1C-043-A	1C-043-Z	7/16	15/16	3/8	6-32 x 3/8	20	0.81
1C-050	1C-050-S	1C-050-A	1C-050-Z	1/2	1 1/8	13/32	8-32 x 1/2	20	1.30
1C-056	1C-056-S	1C-056-A		9/16	1 5/16	7/16	10-32 x 1/2	20	2.00
1C-062	1C-062-S	1C-062-A	1C-062-Z	5/8	1 5/16	7/16	10-32 x 1/2	20	1.80
1C-068	1C-068-S	1C-068-A		11/16	1 1/2	1/2	10-32 x 1/2	20	2.90
1C-075	1C-075-S	1C-075-A	1C-075-Z	3/4	1 1/2	1/2	1/4-28 x 5/8	20	2.70
1C-081	1C-081-S	1C-081-A		13/16	1 5/8	1/2	1/4-28 x 5/8	20	3.20
1C-087	1C-087-S	1C-087-A		7/8	1 5/8	1/2	1/4-28 x 5/8	20	2.96
1C-093	1C-093-S	1C-093-A		15/16	1 3/4	1/2	1/4-28 x 5/8	20	3.51
1C-100	1C-100-S	1C-100-A	1C-100-Z	1	1 3/4	1/2	1/4-28 x 5/8	20	3.30
1C-106	1C-106-S	1C-106-A		1 1/16	1 7/8	1/2	1/4-28 x 5/8	10	3.90
1C-112	1C-112-S	1C-112-A		1 1/8	1 7/8	1/2	1/4-28 x 3/4	10	3.63
1C-118	1C-118-S	1C-118-A	1C-118-Z	1 3/16	2 1/16	1/2	1/4-28 x 3/4	10	4.70
1C-125	1C-125-S	1C-125-A	1C-125-Z	1 1/4	2 1/16	1/2	1/4-28 x 3/4	10	4.40
1C-131	1C-131-S	1C-131-A		1 5/16	2 1/4	9/16	1/4-28 x 3/4	10	6.19
1C-137	1C-137-S	1C-137-A		1 3/8	2 1/4	9/16	1/4-28 x 3/4	10	5.90
1C-143	1C-143-S	1C-143-A		1 7/16	2 1/4	9/16	1/4-28 x 3/4	10	5.50
1C-150	1C-150-S	1C-150-A	1C-150-Z	1 1/2	2 3/8	9/16	1/4-28 x 3/4	10	6.30
1C-156	1C-156-S	1C-156-A		1 9/16	2 3/8	9/16	1/4-28 x 3/4	10	5.90
1C-162	1C-162-S	1C-162-A		1 5/8	2 5/8	11/16	5/16-24 x 1	5	9.65
1C-168	1C-168-S	1C-168-A		1 11/16	2 3/4	11/16	5/16-24 x 1	5	10.70
1C-175	1C-175-S	1C-175-A	1C-175-Z	1 3/4	2 3/4	11/16	5/16-24 x 1	5	10.20
1C-187	1C-187-S	1C-187-A		1 7/8	2 7/8	11/16	5/16-24 x 1	5	10.90
1C-193	1C-193-S	1C-193-A	1C-193-Z	1 15/16	3	11/16	5/16-24 x 1	5	12.00
1C-200	1C-200-S	1C-200-A	1C-200-Z	2	3	11/16	5/16-24 x 1	5	11.60
1C-212				2 1/8	3 1/4	3/4	5/16-24 x 1	5	15.20
1C-218				2 3/16	3 1/4	3/4	5/16-24 x 1	5	14.40
1C-225			1C-225-Z	2 1/4	3 1/4	3/4	5/16-24 x 1	5	13.66
1C-237				2 3/8	3 1/2	3/4	5/16-24 x 1	5	16.50
1C-243				2 7/16	3 1/2	3/4	5/16-24 x 1	5	15.60
1C-250			1C-250-Z	2 1/2	3 3/4	7/8	3/8-24 x 1	5	23.10
1C-262				2 5/8	3 7/8	7/8	3/8-24 x 1	5	23.90
1C-268				2 11/16	4	7/8	3/8-24 x 1	5	25.80
1C-275			1C-275-Z	2 3/4	4	7/8	3/8-24 x 1	5	29.20
1C-287				2 7/8	4 1/4	7/8	3/8-24 x 1	5	29.20
1C-293			1C-293-Z	2 15/16	4 1/4	7/8	3/8-24 x 1	5	28.00
1C-300			1C-300-Z	3	4 1/4	7/8	3/8-24 x 1	5	26.80
H1C-318				3 3/16	4 1/2	7/8	3/8-24 x 1	5	28.30
H1C-325				3 1/4	4 1/2	7/8	3/8-24 x 1	5	27.30
H1C-343				3 7/16	4 3/4	7/8	3/8-24 x 1	5	31.00
H1C-350				3 1/2	4 3/4	7/8	3/8-24 x 1	5	29.10
H1C-393				3 15/16	5 1/4	7/8	3/8-24 x 1	5	35.00
H1C-400				4	5 1/4	7/8	3/8-24 x 1	5	33.00

### END STOP COLLARS - ESC-SERIES

Fits over rail assembly on precision shafting



Black Oxide Steel	Stainless Steel	Bore Size	OD	Width	Clamp Screw	Weight (Ounce)*
ESC-050	ESC-050-S	1/2	1 3/8	3/4	8-32 x 5/8	3.57
ESC-062	ESC-062-S	5/8	1 1/2	3/4	10-32 x 5/8	3.97
ESC-075	ESC-075-S	3/4	1 3/4	7/8	1/4-28 x 5/8	6.29
ESC-100	ESC-100-S	1	2	7/8	1/4-28 x 5/8	7.81
ESC-125	ESC-125-S	1 1/4	2 1/2	1	1/4-28 x 5/8	14.05
ESC-150	ESC-150-S	1 1/2	2 3/4	1	1/4-28 x 5/8	16.96