

BRONZE BEARING, PRESSED STEEL HOUSING, SELF-ALIGNING TYPE

Two-piece housing has rust-proof plated finish. Can be mounted vertically or horizontally. Spring-lid oil cap can be positioned 4 ways. Porous flanged bronze bearings are press-fit in sturdy zinc die-cast sphere with felt strip for lubrication. Includes 2 rubber grommets to reduce noise and vibration. Tolerates -5° to 220° F. (Rubber grommets replaceable – see below.)



PBPS-BR - Series

Part No.	Bore Dia. (in.)	Load Capacity	A	B	C	D	E	F	G	Wt. Lbs.
PBPS-BR-050	1/2	Max. PV 50,000*	1	2 3/32	4	3	7/16	9/64	1 1/8	0.5
PBPS-BR-062	5/8	Max. PV 50,000*	1	2 3/32	4	3	7/16	9/64	1 1/8	0.5
PBPS-BR-075	3/4	Max. PV 50,000*	1	2 3/32	4	3	7/16	9/64	1 1/8	0.5
PBPS-BR-100	1	Max. PV 50,000*	1	2 3/32	4	3	7/16	9/64	1 1/8	0.4

UHMW-PE BEARING, SOLID-RIGID TYPE

Entire unit is UHMW-PE. USDA and FDA approved. -60° to 180° F temperature range. For wash down applications in wet or harsh environments or where sanitary conditions are a factor. Self-lubricating bearings resist corrosion, high impact and abrasion. Interchangeable with most metal units.



PBUH-UH - Series

Part No.	Bore Dia. (in.)	Load Capacity	A	B	C	D	E	F	G	Wt. Lbs.
PBUH-UH-050	1/2	Max. PV 3,000*	1 3/16	2 3/16	4 3/4	3 3/8	7/16	5/8	1 1/2	0.4
PBUH-UH-062	5/8	Max. PV 3,000*	1 3/16	2 3/16	4 3/4	3 3/8	7/16	5/8	1 1/2	0.4
PBUH-UH-075	3/4	Max. PV 3,000*	1 5/16	2 1/2	5 1/4	3 3/4	7/16	5/8	1 1/2	0.4
PBUH-UH-100	1	Max. PV 3,000*	1 7/16	2 3/4	5 1/2	4	7/16	3/4	1 1/2	0.5

UHMW-PE PRESSED STAINLESS STEEL HOUSING, SELF-ALIGNING TYPE

USDA and FDA approved. For wash-down applications in wet or harsh environments or where sanitary conditions are a factor. Self-lubricating bearings resist corrosion, high impact and abrasion. Two-piece stainless steel housing units. Interchangeable with most metal units. Tolerates -60° to 180° F. (UHMW-PE bearing replaceable – see below.)

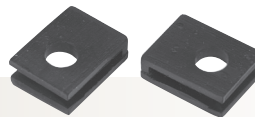


PBSS-UH - Series

Part No.	Bore Dia. (in.)	Load Capacity	A	B	C	D	E	F	G	Wt. Lbs.
PBSS-UH-050	1/2	Max. PV 3,000*	1	2	4	3	7/16	1/8	1 1/8	0.3
PBSS-UH-062	5/8	Max. PV 3,000*	1	2	4	3	7/16	1/8	1 1/8	0.3
PBSS-UH-075	3/4	Max. PV 3,000*	1	2	4	3	7/16	1/8	1 1/8	0.2
PBSS-UH-100	1	Max. PV 3,000*	1	2	4	3	7/16	1/8	1 1/8	0.2

* To calculate the PV Factor see formula on page 2.

REPLACEMENT PARTS



Ball Bearing Insert		UHMW-PE Bearing Insert		Rubber Liner		Rubber Grommets - set of 2	
Part No.	Rplc. Size	Part No.	Rplc. Size	Part No.	Rplc. Size	Part No.	Rplc. Size
BL-050	1/2	UH-050	1/2	RB-062	1/2	RG-1000	Universal
BL-062	5/8	UH-062	5/8	RB-062	5/8		
BL-075	3/4	UH-075	3/4	RB-075	3/4		
BL-100	1	UH-100	1	RB-100	1		