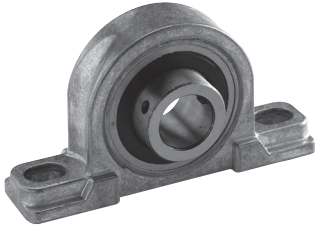


BALL BEARING, DIE-CAST HOUSING, RIGID TYPE

Well suited for applications requiring strong load support in limited mounting area. Solid zinc die-cast housing, is non-corrosive and lightweight and securely retains bearing by pressing the lip 360 degrees over the outer race. Includes 2 set screws.



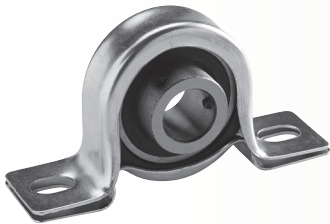
PBDC-BL - Series

Part No.	Bore Dia. (in.)	Load Capacity		A	B	C	D	E	F	G	Wt. Lbs.
		Dynamic (Lbs.)	Static (Lbs.)								
PBDC-BL-050	1/2	2877	1479	1 1/8	2 5/16	4 1/4	3 3/8	3/8	7/16	1 5/16	0.9
PBDC-BL-062	5/8	2877	1479	1 1/8	2 5/16	4 1/4	3 3/8	3/8	7/16	1 5/16	0.8
PBDC-BL-075	3/4	2877	1479	1 1/8	2 5/16	4 1/4	3 3/8	3/8	7/16	1 5/16	0.9
PBDC-BL-100	1	3153	1768	1 1/4	2 1/2	4 5/8	3 5/8	3/8	1/2	1 3/8	1.0

BALL BEARING, PRESSED STEEL HOUSING, SELF-ALIGNING, STANDARD TYPE

Two-piece housing has rust-proof plated finish. Bearing insert is encased in non-conductive, oil resistant rubber liner which corrects up to 2° misalignment while reducing vibration and noise.

Includes 2 set screws. (Ball bearing and rubber liner replaceable - see page 5.)

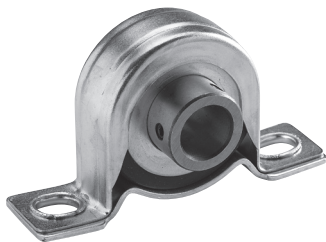


PBPS-BL - Series

Part No.	Bore Dia. (in.)	Load Capacity		A	B	C	D	E	F	G	Wt. Lbs.
		Dynamic (Lbs.)	Static (Lbs.)								
PBPS-BL-050	1/2	2152	1075	15/16	1 7/8	4 3/16	3 3/16	7/16	7/64	1 3/16	0.4
PBPS-BL-062	5/8	2152	1075	15/16	1 7/8	4 3/16	3 3/16	7/16	7/64	1 3/16	0.4
PBPS-BL-075	3/4	2877	1479	1 3/16	2 5/16	4 7/16	3 7/16	7/16	1/8	1 5/16	0.6
PBPS-BL-100	1	3153	1768	1 3/16	2 5/16	4 7/16	3 7/16	7/16	1/8	1 5/16	0.6

BALL BEARING, PRESSED STEEL HOUSING, SELF-ALIGNING, HEAVY GAUGE TYPE

Heavy gauge two-piece housing has rust-proof plated finish crimped together at bolt holes. Bearing insert with two set screws has longer inner race for added load support. Extra-thick non-conductive rubber liner corrects misalignment up to 2° while reducing vibration and noise.



PBPH-BL - Series

Part No.	Bore Dia. (in.)	Load Capacity		A	B	C	D	E	F	G	Wt. Lbs.
		Dynamic (Lbs.)	Static (Lbs.)								
PBPH-BL-050	1/2	2877	1479	1 5/16	2 5/8	4 7/16	3 7/16	7/16	9/64	1 11/16	1.0
PBPH-BL-062	5/8	2877	1479	1 5/16	2 5/8	4 7/16	3 7/16	7/16	9/64	1 11/16	0.9
PBPH-BL-075	3/4	2877	1479	1 5/16	2 5/8	4 7/16	3 7/16	7/16	9/64	1 11/16	0.7
PBPH-BL-100	1	3153	1768	1 1/2	2 7/8	5 3/16	4	1/2	9/64	1 7/8	1.1

BRONZE BEARING, DIE-CAST HOUSING, RIGID TYPE

Porous bronze sleeve bearing press-fit in solid zinc die-cast housing, non-corrosive and lightweight with oil hole for lubrication. For use in lighter duty applications. Tolerates -5° to 220° F.



PBDC-BR - Series

Part No.	Bore Dia. (in.)	Load Capacity		A	B	C	D	E	F	G	Wt. Lbs.
		Max. PV	Static (Lbs.)								
PBDC-BR-050	1/2	Max. PV	50,000*	1	1 7/8	3 9/16	2 13/16	5/16	5/8	1 1/8	0.6
PBDC-BR-062	5/8	Max. PV	50,000*	1	1 7/8	3 9/16	2 13/16	5/16	5/8	1 1/8	0.5
PBDC-BR-075	3/4	Max. PV	50,000*	1	1 7/8	3 9/16	2 13/16	5/16	5/8	1 1/8	0.4

* To calculate the PV Factor see formula on page 2.